



## **M.I.E.T. ENGINEERING COLLEGE**

(Approved by AICTE, New Delhi, Affiliated to Anna University, Chennai)  
UG - CSE, EEE & MECH Programs Accredited by NBA, New Delhi.  
(An ISO 9001:2015 Certified Institution)  
TRICHY - PUDUKKOTTAI ROAD, TIRUCHIRAPPALLI - 620 007.  
Email: principalengg@miet.edu, contact@miet.edu  
Website: www.miet.edu



Ph: 0431 - 2660 303

### **Criteria 4.1.1**

# **Overall Infrastructure And Building Plan**

  
PRINCIPAL  
M.I.E.T. ENGINEERING COLLEGE  
GUNDUR, TIRUCHIRAPPALLI-620 007.



# M.I.E.T. ENGINEERING COLLEGE

(Approved by AICTE, New Delhi, Affiliated to Anna University, Chennai)  
UG - CSE, EEE & MECH Programs Accredited by NBA, New Delhi.  
(An ISO 9001:2015 Certified Institution)  
TRICHY - PUDUKKOTTAI ROAD, TIRUCHIRAPPALLI - 620 007.  
Email: principalengg@miet.edu, contact@miet.edu  
Website: - www.miet.edu



Ph: 0431 - 2660 303

## Criteria 4.1.1

The Institution has adequate infrastructure and physical facilities for teaching- learning. viz., classrooms, laboratories, computing equipment etc.

Sl No	Description	Page No
1.	List of Facilities	3
2.	Library And Reading Hall	5
3.	Seminar Hall	6
4.	Smart Class Room	7
5.	Board Room	7
6.	R&D EEE Department	8
7.	Loading Frame	9
8.	Thermal Engineering Lab	9
9.	Training & Placement Cell	10
10.	HOD Cabin	10
11.	First Aid Cum Sick Room	11
12.	Exam Control Office	11
13.	Cafeteria	12
14.	Security	12
15.	Hostel Block	13
16.	Housekeeping & Maintenance	14
17.	Building Plan	15

  
**PRINCIPAL**  
M.I.E.T. ENGINEERING COLLEGE  
GUNDUR, TIRUCHIRAPPALLI-620 007.



# M.I.E.T. ENGINEERING COLLEGE

(Approved by AICTE, New Delhi, Affiliated to Anna University, Chennai)  
UG - CSE, EEE & MECH Programs Accredited by NBA, New Delhi.  
(An ISO 9001:2015 Certified Institution)  
TRICHY - PUDUKKOTTAI ROAD, TIRUCHIRAPPALLI - 620 007.  
Email: principalengg@miet.edu, contact@miet.edu  
Website: - www.miet.edu



Ph: 0431 - 2660 303

## Criteria 4.1.1

Sl.No	Infrastructure	No of Rooms	Facilities
1.	Board Room	1	Smart Board, Quality audio equipment with Internet connection and Air conditioned
2.	HoD Room	7	Computer with Internet connection, Printer, CCTV Camera and Furniture
3.	Central Store	2	Racks
4.	Exam Control Office	1	Computer with Internet, UPS and Furniture.
5.	Housekeeping	1	Tools
6.	Maintenance	1	Tools
7.	Office All Inclusive	2	Furniture, Air conditioned and CCTV Camera.
8.	Training and Placement Cell	1	Audio equipment with Internet Connection. Air Conditioned Interview Room and GD Room.
9.	Principal Office	1	Computer with Internet Connection, Printer, UPS and Furniture.
10.	Security Room	2	Furniture
11.	Boys Common Room	4	Furniture
12.	Cafeteria	2	Dining Table with Chairs and Acquo Purifier Water
13.	First aid cum Sick Room	1	Doctor Room and First aid kit.
14.	Girls Common Room	3	Furniture
15.	Stationery Store	1	Furniture

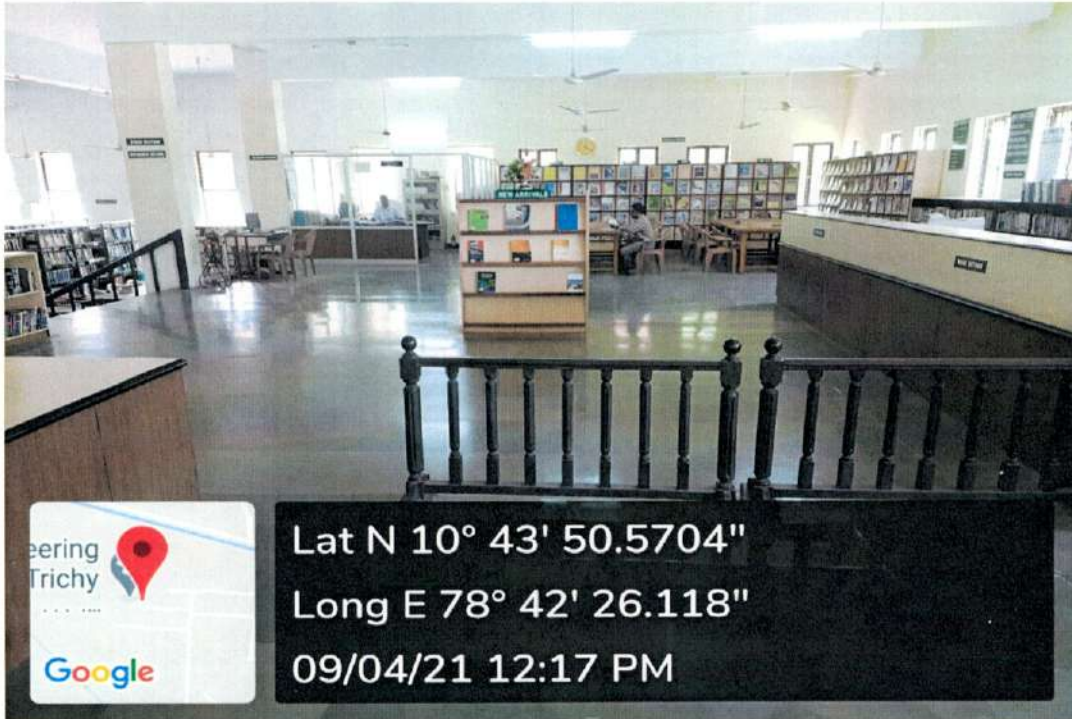
  
**PRINCIPAL**  
M.I.E.T. ENGINEERING COLLEGE  
GUNDUR, TIRUCHIRAPPALLI-620 007.

Sl.No	Infrastructure	No of Rooms	Facilities
16.	Laboratory	32	Lab equipment, Work table, Air Conditioned for computer labs, CCTV Camera and Furniture
17.	Library and Reading Room	1	Reading Table with Chairs and Computer with Internet connection systems
18.	Classroom (UG & PG)	35	Table & Benches, Black board, Notice board with ICT
19.	Tutorial Room	06	Table & Benches, Black board and Notice board.
20.	Seminar Hall	4	Table & Benches, Black board, CCTV Camera, Computer Internet, Air Conditioned and Quality audio equipment.
21.	Drawing Hall	2	Table and Benches
22.	Faculty Room	25	Separate Cabin. Furniture, Computer with internet connection.
23.	Pantry for Staff	1	Furniture
24.	Toilet (Girls and Boys)	9	Wash basin, bathroom, Mugs and Buckets.
25.	Boys Hostel	111	Furniture, TV, CCTV Camera, Volley ball court and Dining hall.
26.	Girls Hostel	104	Lift, Furniture's, TV, CCTV Camera, Computer Laboratory, Seminar Hall, Student Service Center, Biometric Attendance, Dispensary, Indoor Games ( Carrom Board, Chess, Table Tennis), Dining hall and Rest Rooms.

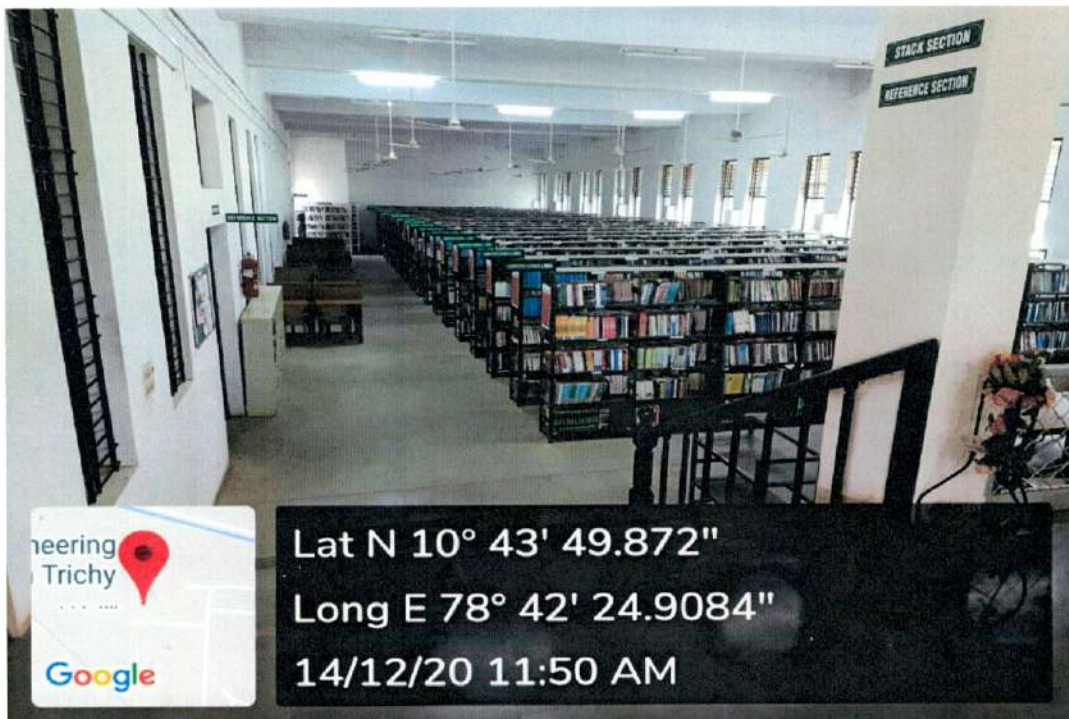
  
**PRINCIPAL**  
**M.I.E.T. ENGINEERING COLLEGE**  
**GUNDUR, TIRUCHIRAPPALLI-620 007.**



## Criteria 4.1.1



Library Circulation Section



Library Stock Section

  
PRINCIPAL  
M.I.E.T. ENGINEERING COLLEGE  
GUNDUR, TIRUCHIRAPPALLI-620 007.





Library Reference Section



CSE / Science & Humanities Department- Seminar Hall

*Principal*  
PRINCIPAL  
M.I.E.T. ENGINEERING COLLEGE  
GUNDUR, TIRUCHIRAPPALLI-620 007.





# M.I.E.T. ENGINEERING COLLEGE

(Approved by AICTE, New Delhi, Affiliated to Anna University, Chennai)  
UG - CSE, EEE & MECH Programs Accredited by NBA, New Delhi.  
(An ISO 9001:2015 Certified Institution)  
TRICHY - PUDUKKOTTAI ROAD, TIRUCHIRAPPALLI - 620 007.  
Email: principalengg@miet.edu, contact@miet.edu  
Website: www.miet.edu



Ph: 0431 - 2660 303



CSE - Smart Class Room



Board Room

*A. S. J.*  
PRINCIPAL  
M.I.E.T. ENGINEERING COLLEGE  
GUNDUR, TIRUCHIRAPPALLI-620 007.



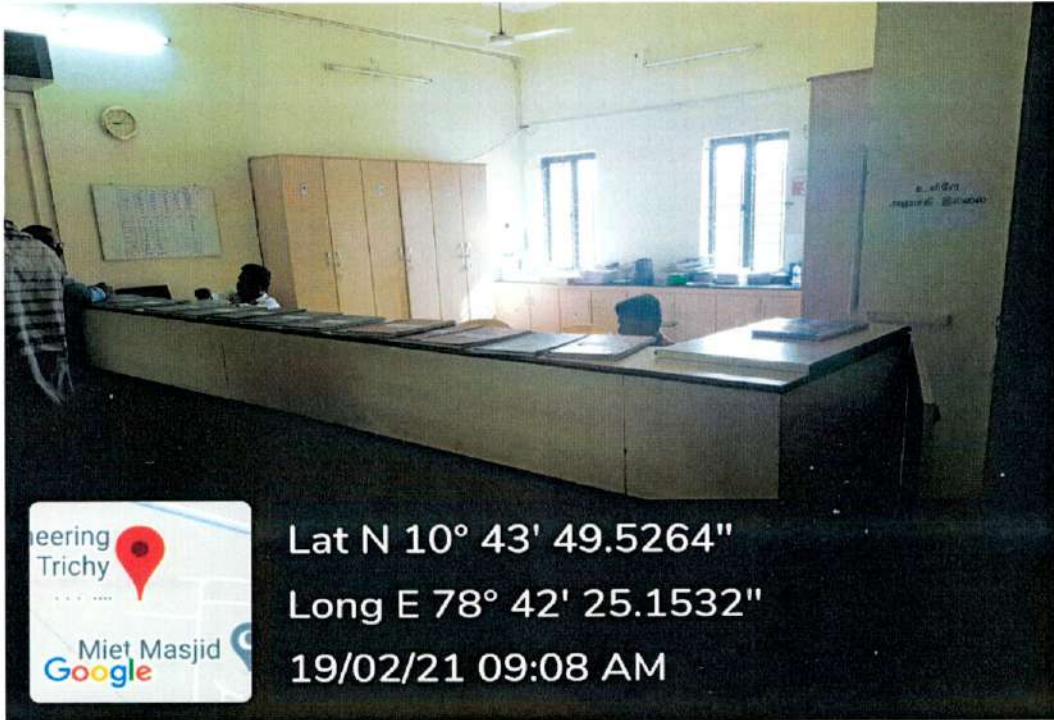


# M.I.E.T. ENGINEERING COLLEGE

(Approved by AICTE, New Delhi, Affiliated to Anna University, Chennai)  
UG - CSE, EEE & MECH Programs Accredited by NBA, New Delhi.  
(An ISO 9001:2015 Certified Institution)  
TRICHY - PUDUKKOTTAI ROAD, TIRUCHIRAPPALLI - 620 007.  
Email: principalengg@miet.edu, contact@miet.edu  
Website: www.miet.edu



Ph: 0431 - 2660 303



College Office



Administrative Office

*A. S. J.*  
PRINCIPAL  
M.I.E.T. ENGINEERING COLLEGE  
GUNDUR, TIRUCHIRAPPALLI-620 007.





# M.I.E.T. ENGINEERING COLLEGE

(Approved by AICTE, New Delhi, Affiliated to Anna University, Chennai)  
UG - CSE, EEE & MECH Programs Accredited by NBA, New Delhi.  
(An ISO 9001:2015 Certified Institution)  
TRICHY - PUDUKKOTTAI ROAD, TIRUCHIRAPPALLI - 620 007.  
Email: principalengg@miet.edu, contact@miet.edu  
Website: www.miet.edu



Ph: 0431 - 2660 303



Lat N 10° 44' 0.8772"  
Long E 78° 42' 7.5276"  
14/12/20 12:59 PM

EEE Department R&D Laboratory



Lat N 10° 43' 49.2132"  
Long E 78° 42' 24.4728"  
14/12/20 12:53 PM

EEE Department- Power System Simulation Laboratory

*Princip*  
PRINCIPAL  
M.I.E.T. ENGINEERING COLLEGE  
GUNDUR, TIRUCHIRAPPALLI-620 007.





# M.I.E.T. ENGINEERING COLLEGE

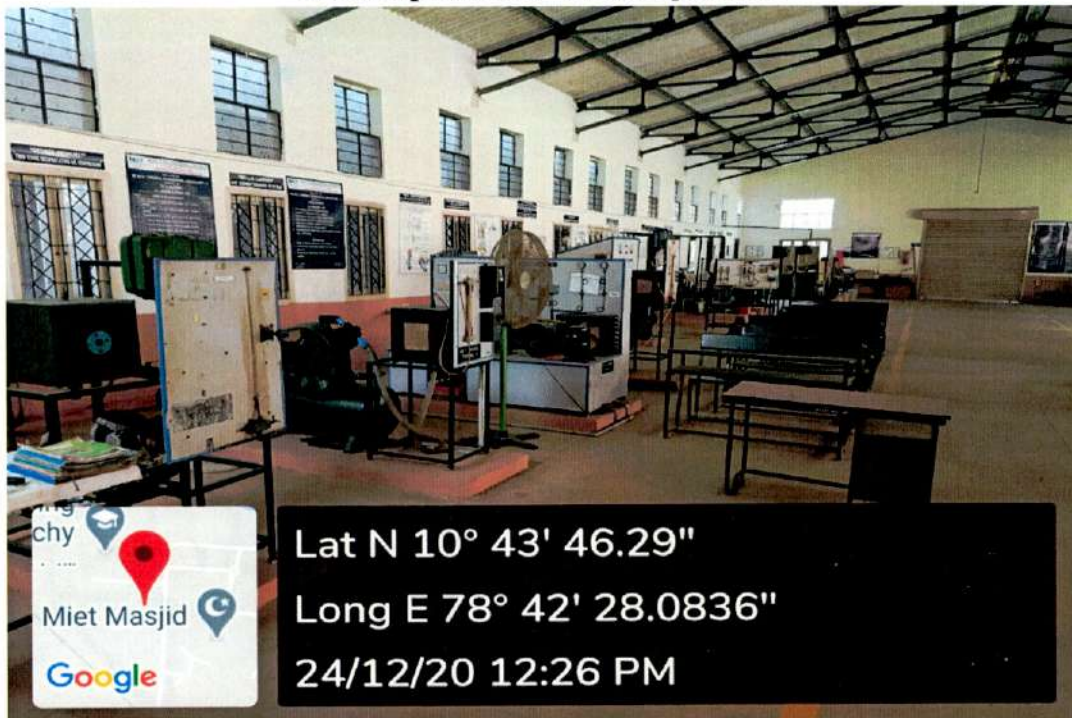
(Approved by AICTE, New Delhi, Affiliated to Anna University, Chennai)  
UG - CSE, EEE & MECH Programs Accredited by NBA, New Delhi.  
(An ISO 9001:2015 Certified Institution)  
TRICHY - PUDUKKOTTAI ROAD, TIRUCHIRAPPALLI - 620 007.  
Email: principalengg@miet.edu, contact@miet.edu  
Website: www.miet.edu



Ph: 0431 - 2660 303



Civil Department – Loading Frame



Mechanical Engineering Department – Thermal Engineering Lab oratory

  
PRINCIPAL  
M.I.E.T. ENGINEERING COLLEGE  
GUNDUR, TIRUCHIRAPPALLI-620 007.





# M.I.E.T. ENGINEERING COLLEGE

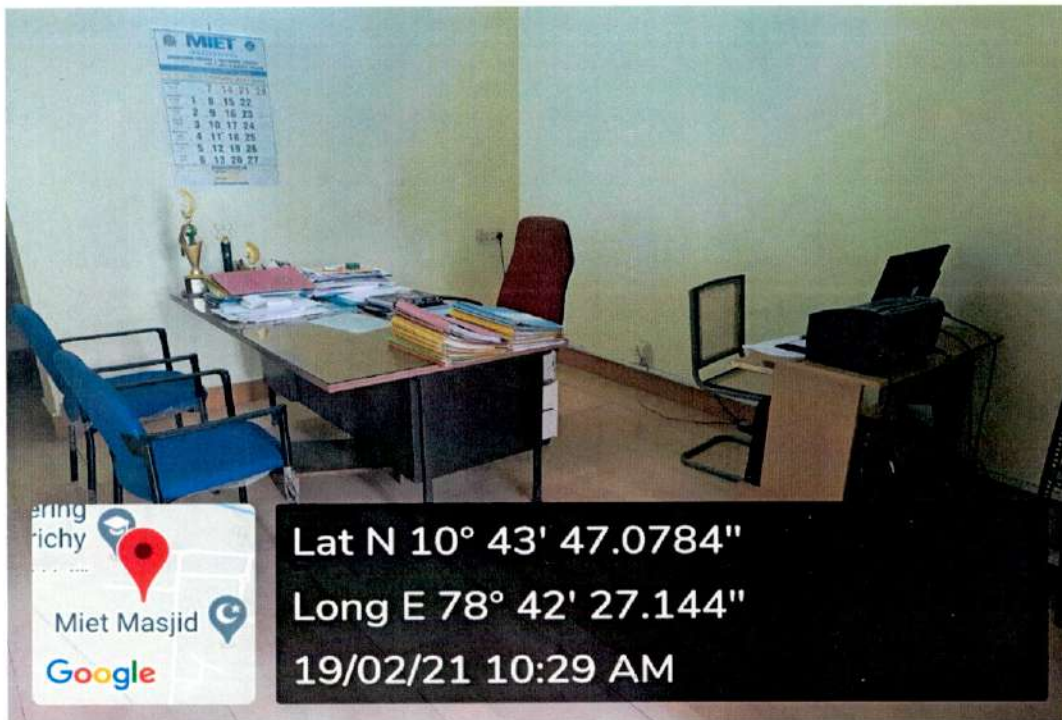
(Approved by AICTE, New Delhi, Affiliated to Anna University, Chennai)  
UG - CSE, EEE & MECH Programs Accredited by NBA, New Delhi.  
(An ISO 9001:2015 Certified Institution)  
TRICHY - PUDUKKOTTAI ROAD, TIRUCHIRAPPALLI - 620 007.  
Email: principalengg@miet.edu, contact@miet.edu  
Website: www.miet.edu



Ph: 0431 - 2660 303



**Training and Placement Cell**



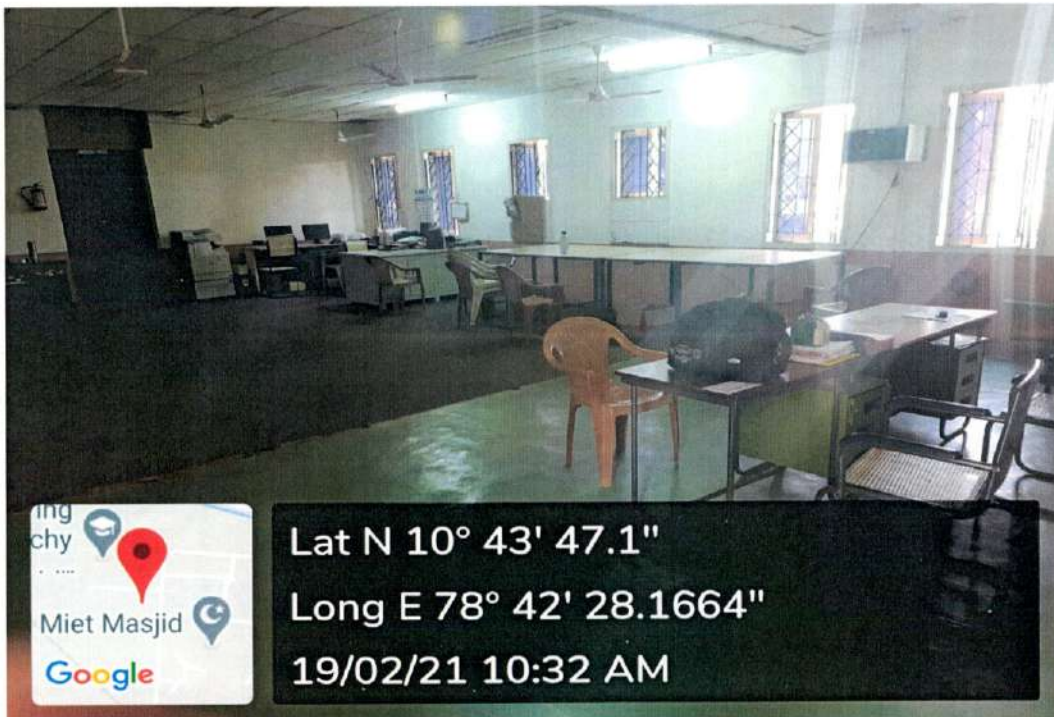
**Cabin for Head of Department**

*[Signature]*  
**PRINCIPAL**  
M.I.E.T. ENGINEERING COLLEGE  
GUNDUR, TIRUCHIRAPPALLI-620 007.





**First aid cum Sick Room**



**Exam Control Office**





# M.I.E.T. ENGINEERING COLLEGE

(Approved by AICTE, New Delhi, Affiliated to Anna University, Chennai)  
UG - CSE, EEE & MECH Programs Accredited by NBA, New Delhi.  
(An ISO 9001:2015 Certified Institution)  
TRICHY - PUDUKKOTTAI ROAD, TIRUCHIRAPPALLI - 620 007.  
Email: principalengg@miet.edu, contact@miet.edu  
Website: www.miet.edu

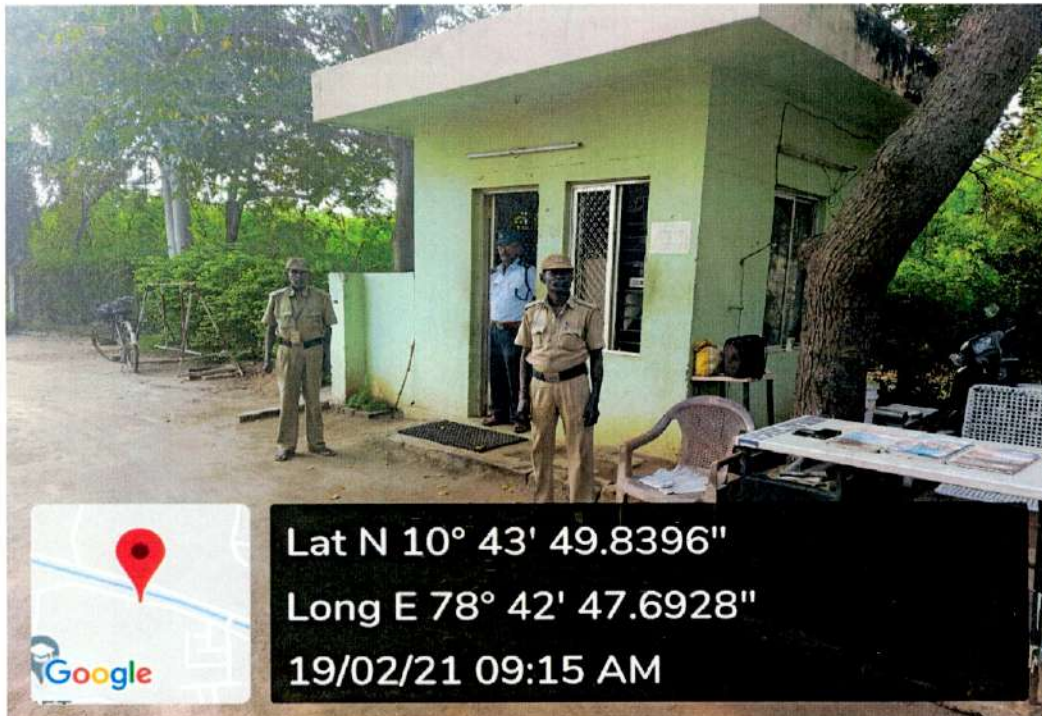


Ph: 0431 - 2660 303



Lat N 10° 43' 51.0204"  
Long E 78° 42' 37.62"  
19/02/21 09:14 AM

Cafeteria



Lat N 10° 43' 49.8396"  
Long E 78° 42' 47.6928"  
19/02/21 09:15 AM

Security

*A. Raj*  
PRINCIPAL  
M.I.E.T. ENGINEERING COLLEGE  
GUNDUR, TIRUCHIRAPPALLI-620 007.





# M.I.E.T. ENGINEERING COLLEGE

(Approved by AICTE, New Delhi, Affiliated to Anna University, Chennai)  
UG - CSE, EEE & MECH Programs Accredited by NBA, New Delhi.  
(An ISO 9001:2015 Certified Institution)  
TRICHY - PUDUKKOTTAI ROAD, TIRUCHIRAPPALLI - 620 007.  
Email: principalengg@miet.edu, contact@miet.edu  
Website: www.miet.edu



Ph: 0431 - 2660 303



**Hostel Block**



**Hostel Dining**

*J. Princy*  
PRINCIPAL  
M.I.E.T. ENGINEERING COLLEGE  
GUNDUR, TIRUCHIRAPPALLI-620 007.





# M.I.E.T. ENGINEERING COLLEGE

(Approved by AICTE, New Delhi, Affiliated to Anna University, Chennai)  
UG - CSE, EEE & MECH Programs Accredited by NBA, New Delhi.  
(An ISO 9001:2015 Certified Institution)  
TRICHY - PUDUKKOTTAI ROAD, TIRUCHIRAPPALLI - 620 007.  
Email: principalengg@miet.edu, contact@miet.edu  
Website: www.miet.edu

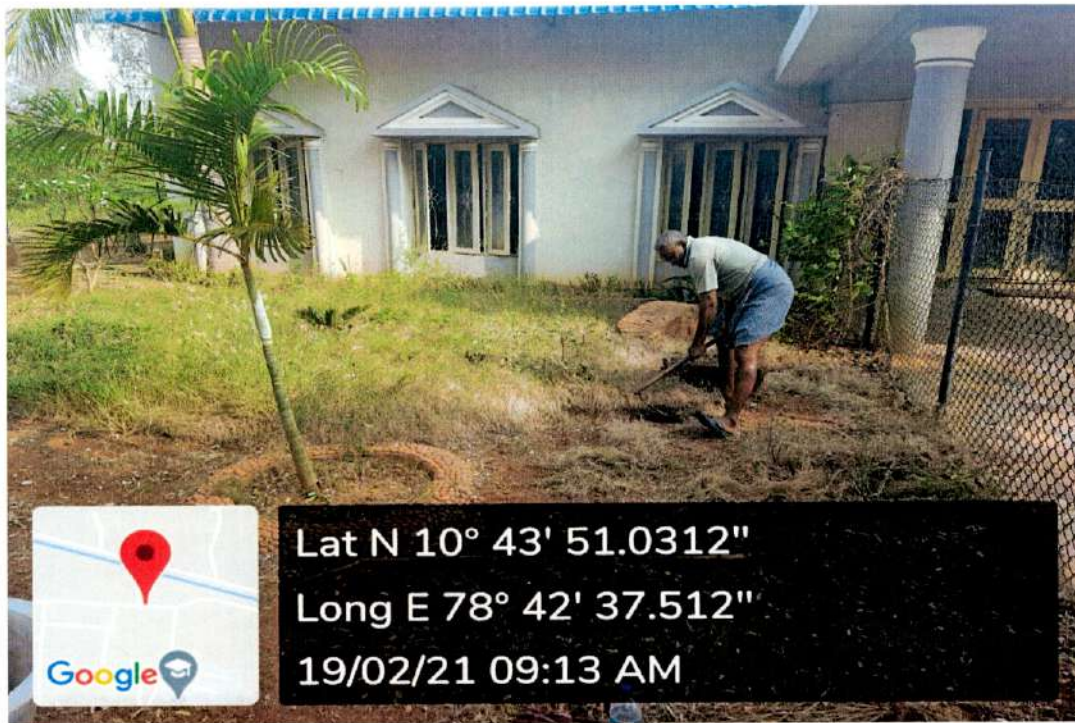


Ph: 0431 - 2660 303



Lat N 10° 43' 49.512"  
Long E 78° 42' 25.128"  
19/02/21 09:36 AM

Housekeeping

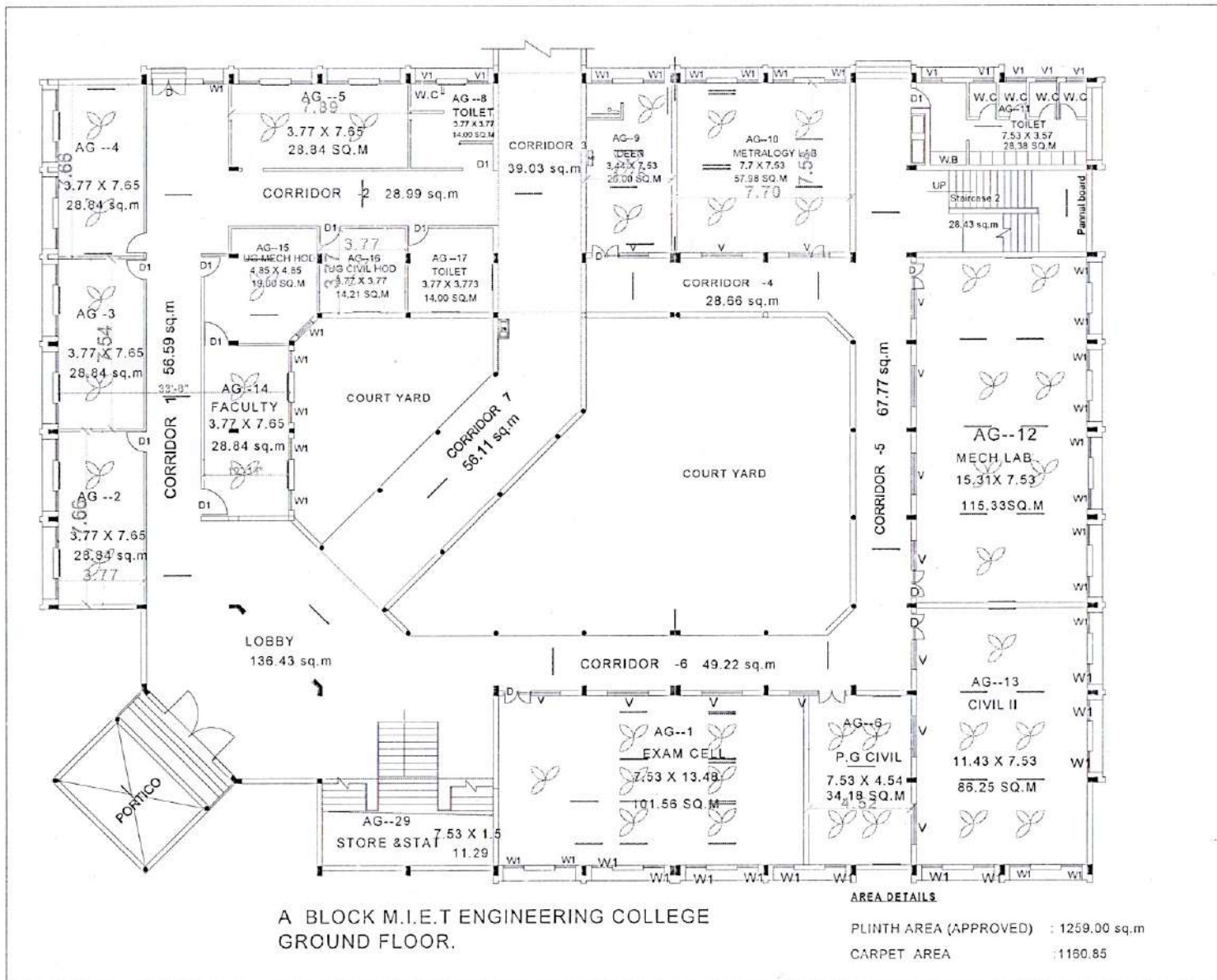


Lat N 10° 43' 51.0312"  
Long E 78° 42' 37.512"  
19/02/21 09:13 AM

Maintenance

*[Signature]*  
PRINCIPAL  
M.I.E.T. ENGINEERING COLLEGE  
GUNBUR, TIRUCHIRAPPALLI-620 007.

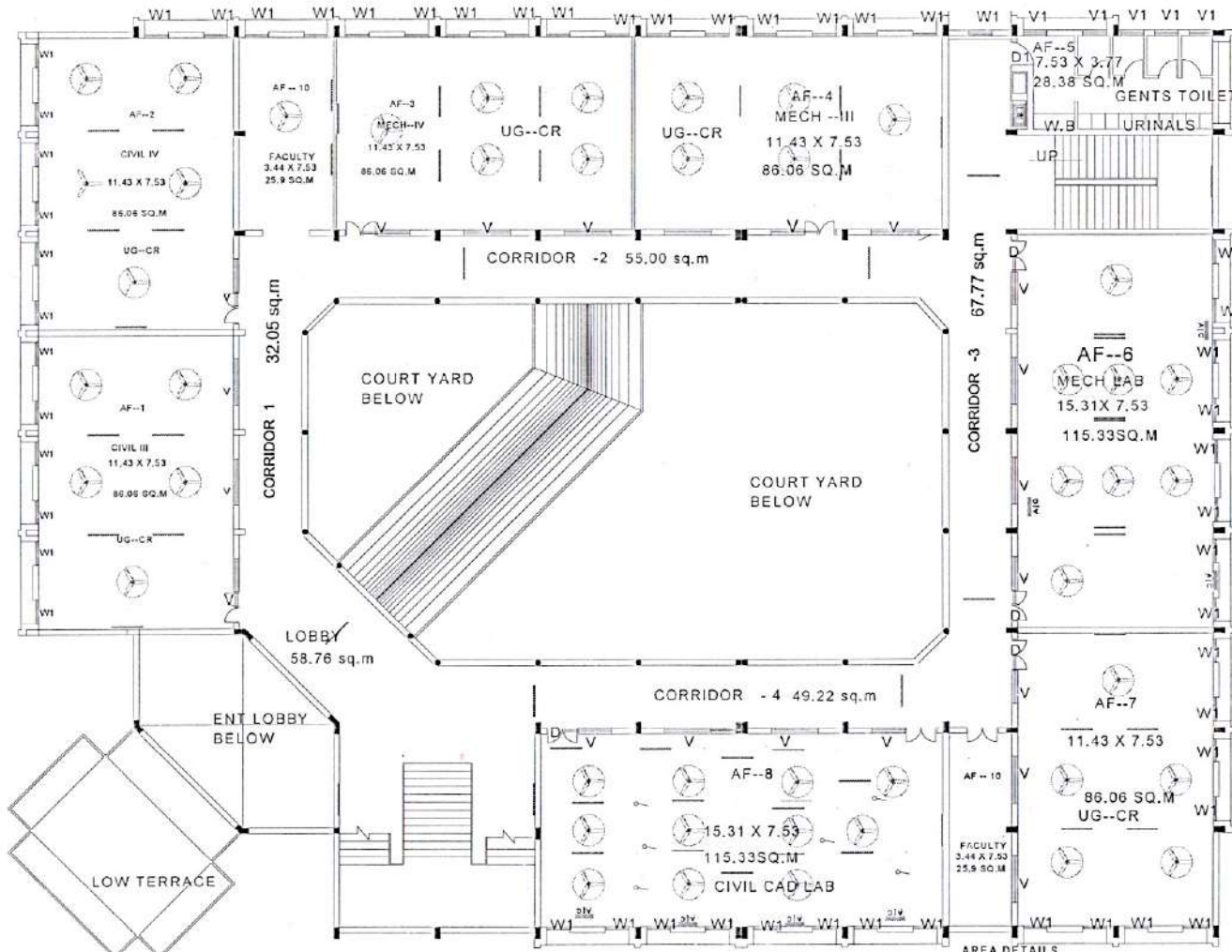
Principal  
 M.I.E.T. ENGINEERING COLLEGE  
 GUNDUR, TIRUCHIRAPPALLI-620 007.



A BLOCK M.I.E.T ENGINEERING COLLEGE  
 GROUND FLOOR.



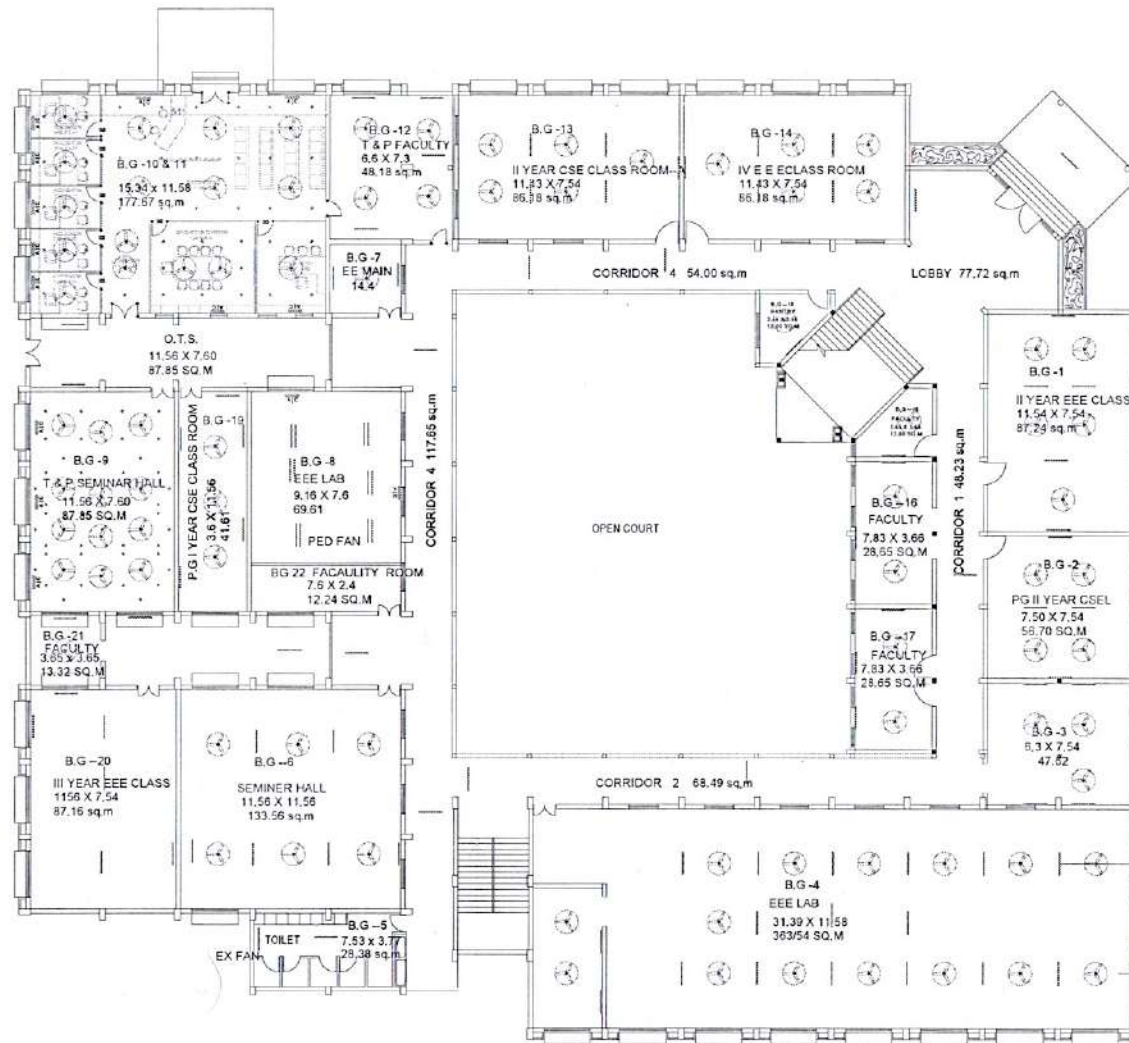
*Aref.*  
**PRINCIPAL**  
**M.I.E.T. ENGINEERING COLLEGE**  
**HUNDUR, TIRUCHIRAPPALLI-620 007.**



**A BLOCK M.I.E.T ENGINEERING COLLEGE 1ST FLOOR.**

**AREA DETAILS**  
 PLINTH AREA (APPROVED) : 1152.00 sq.m  
 CARPET AREA : 978.00 sq.m

M.I.E.T. ENGINEERING COLLEGE  
 GUNDUR, TRUCHARPALLI-620 007.  
 PRINCIPAL  
*A. Sankar*



**B BLOCK M.I.E.T ENGINEERING COLLEGE  
 GROUND FLOOR.**

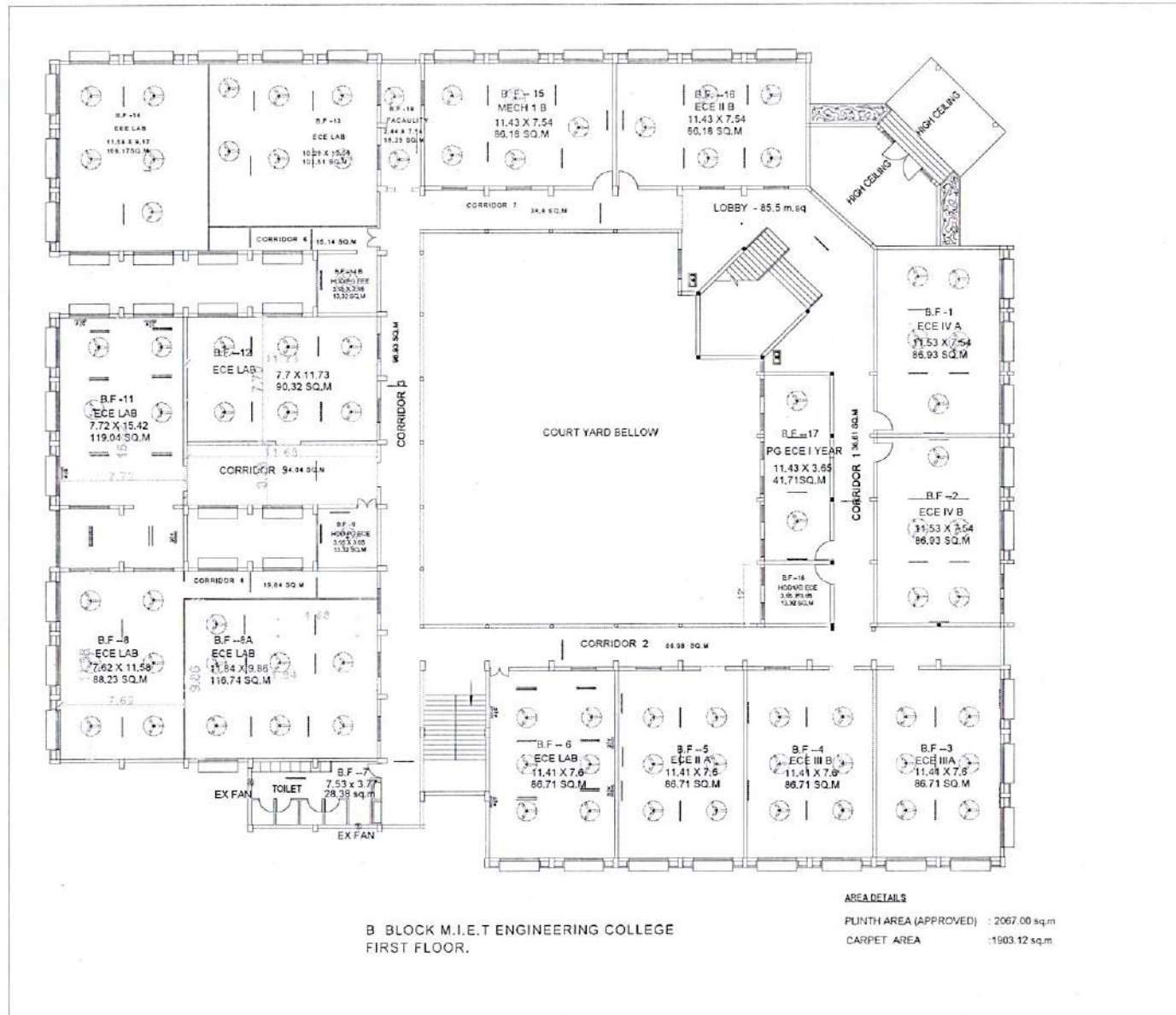
**AREA DETAILS**

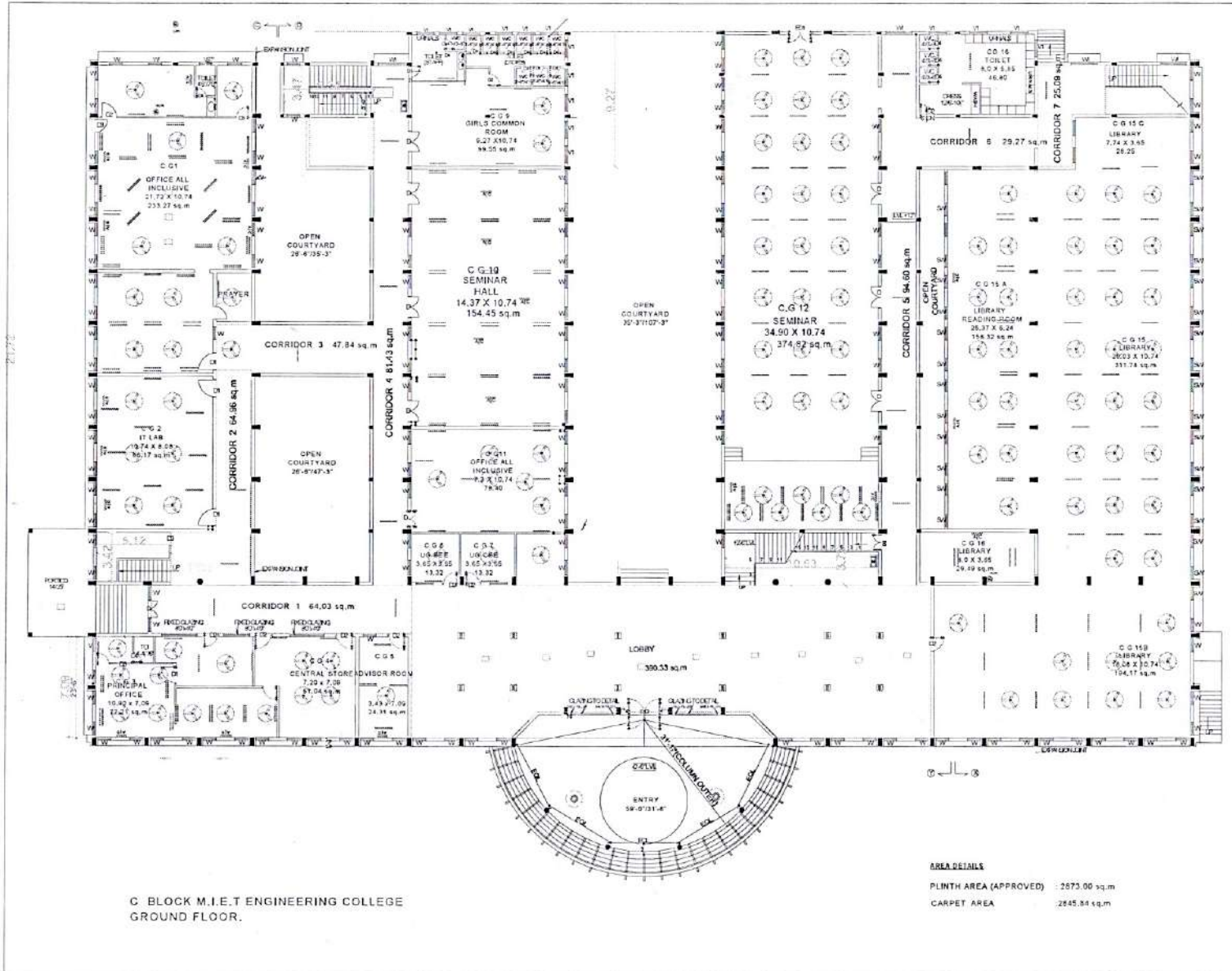
PLINTH AREA (APPROVED) : 2067.00 sq.m

CARPET AREA : 1973.86 sq.m



**Principal**  
**M.I.E.T. ENGINEERING COLLEGE**  
**GUNDUR, TIRUCHIRAPPALLI-620 007.**



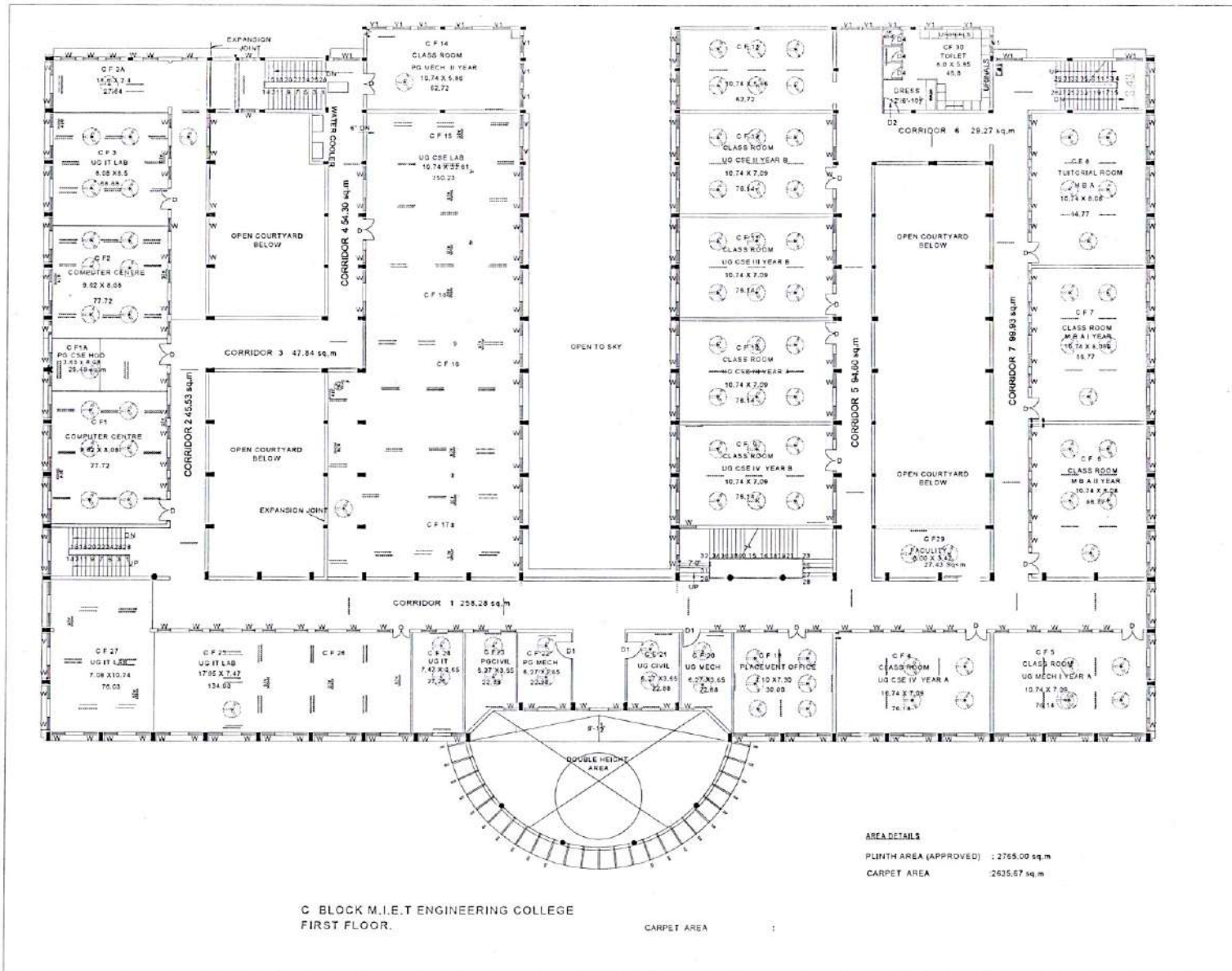


C BLOCK M.I.E.T ENGINEERING COLLEGE  
GROUND FLOOR.

AREA DETAILS  
 PLINTH AREA (APPROVED) : 2873.00 sq.m  
 CARPET AREA : 2645.84 sq.m

*A. Senthil*  
**PRINCIPAL COLLEGE**  
**M.I.E.T. ENGINEERING COLLEGE**  
**GUNDUR, TIRUCHIRAPPALLI-620 007.**



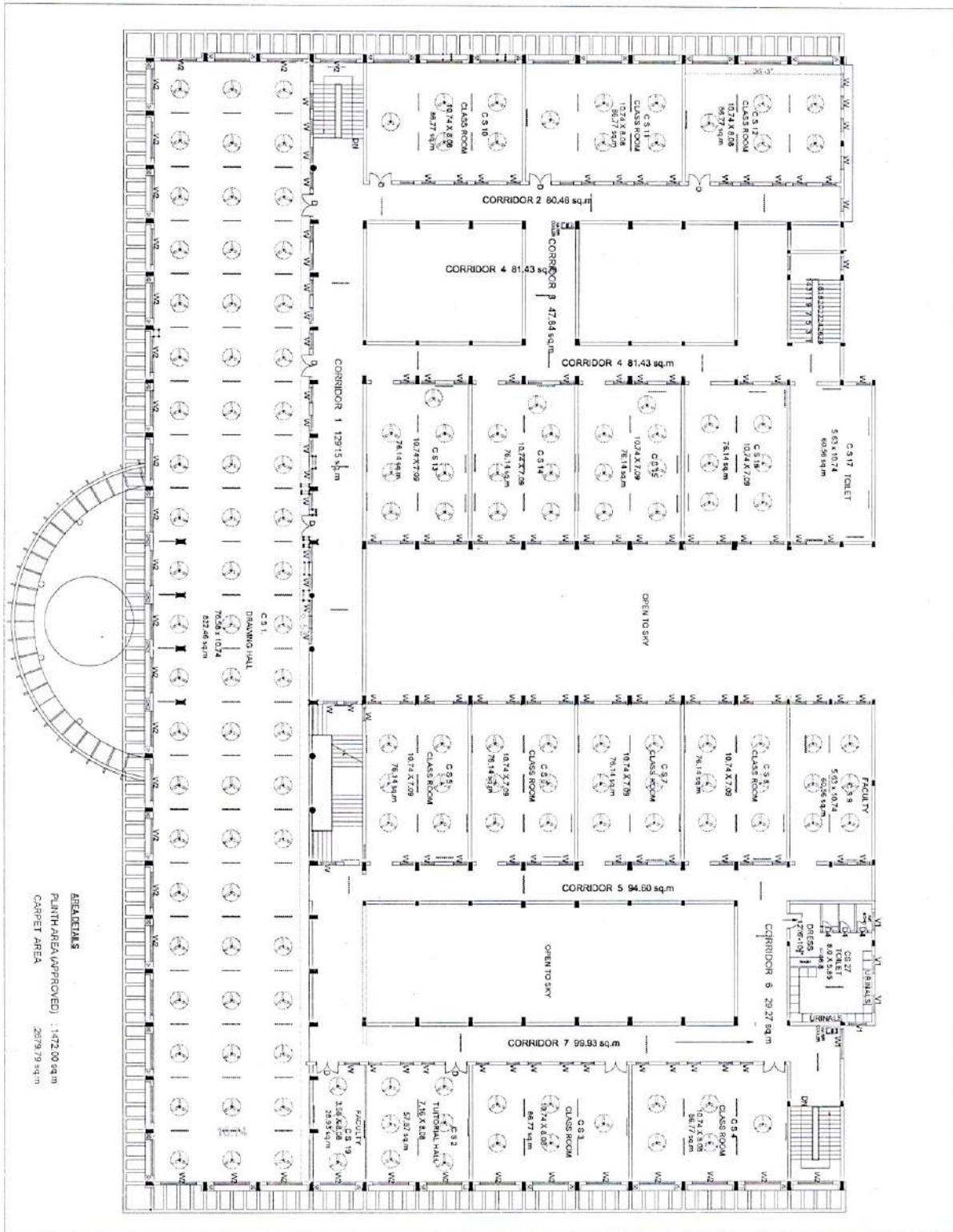


C BLOCK M.I.E.T ENGINEERING COLLEGE  
FIRST FLOOR.

CARPET AREA

AREA DETAILS  
 PLINTH AREA (APPROVED) : 2765.00 sq.m  
 CARPET AREA : 2635.67 sq.m

*A. S. S.*  
**PRINCIPAL COLLEGE**  
**M.I.E.T. ENGINEERING COLLEGE**  
**GUNDUR, TIRUCHIRAPPALLI-620 007.**

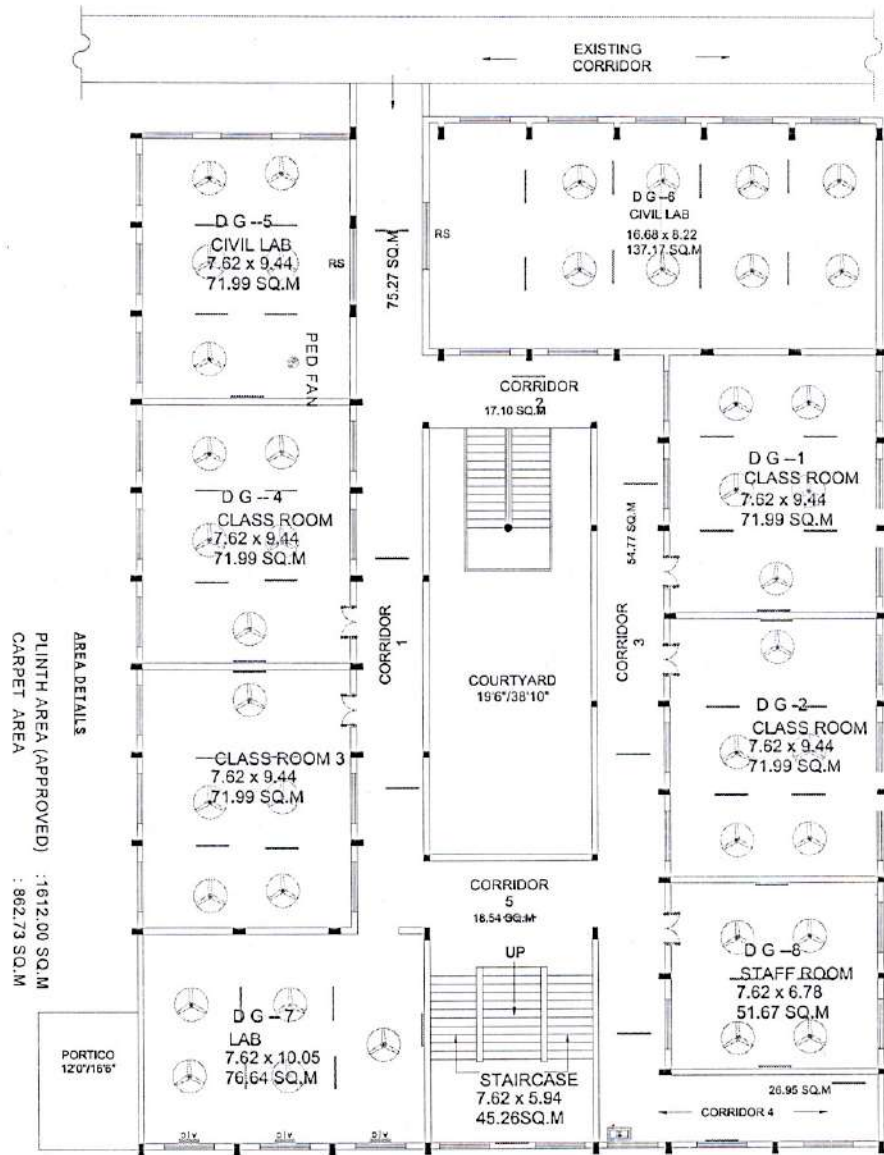


AREAS  
 PLUMB AREA (APPROVED) : 1472.00 sq.m  
 CARPET AREA : 2879.79 sq.m

*A. S. S.*  
**PRINCIPAL**  
**M.I.E.T. ENGINEERING COLLEGE**  
**GUNDUR, TIRUCHIRAPPALLI-620 007.**

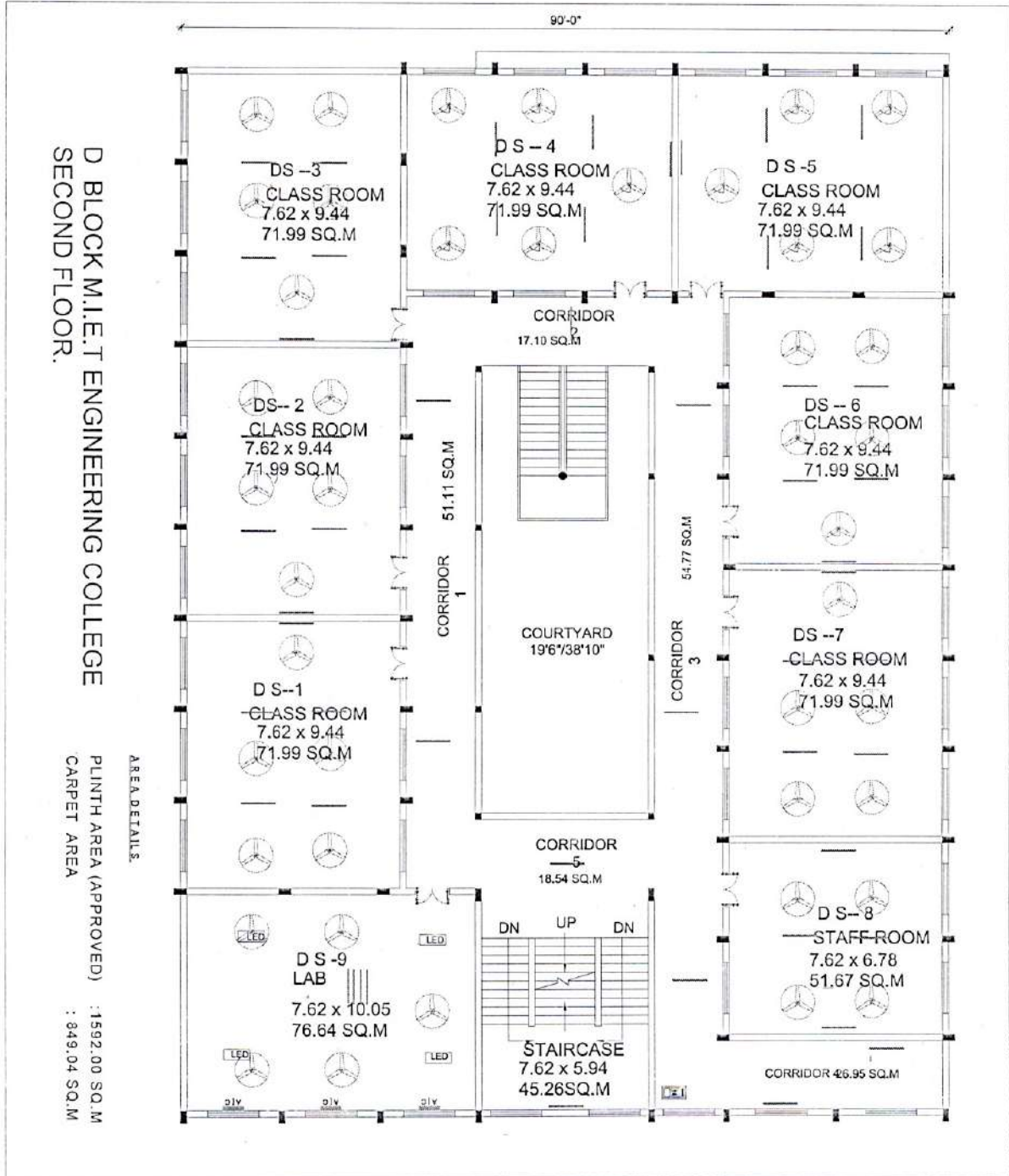


D BLOCK M.I.E.T ENGINEERING COLLEGE  
GROUND FLOOR.



*A. Anand*  
PRINCIPAL

M.I.E.T. ENGINEERING COLLEGE  
GUNDUR, TIRUCHIRAPPALLI-620 007



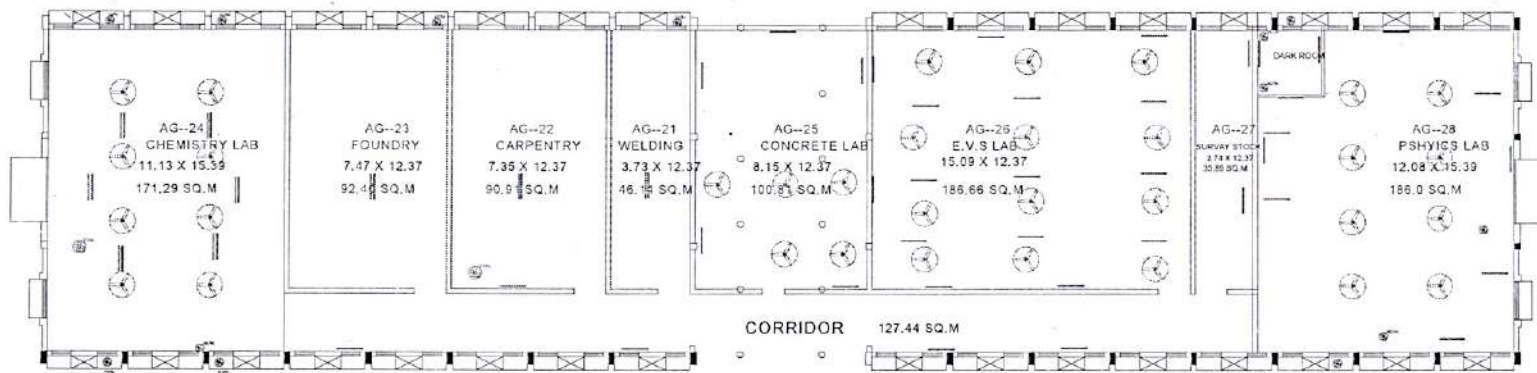
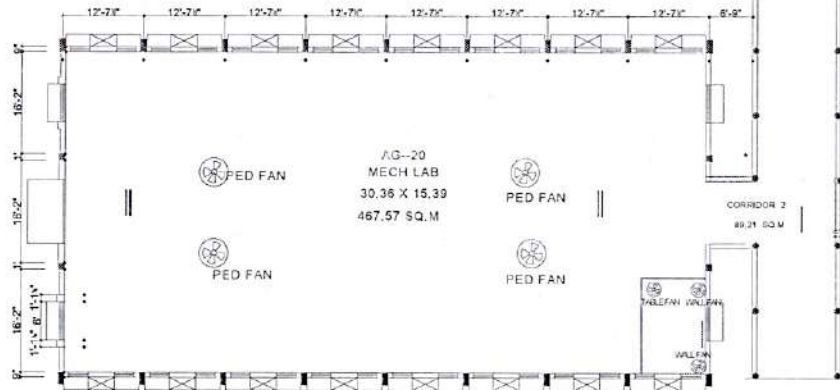
D BLOCK M.I.E.T ENGINEERING COLLEGE  
SECOND FLOOR.

PLINTH AREA (APPROVED) : 1592.00 SQ.M  
CARPET AREA : 849.04 SQ.M

*A. Sub.*  
PRINCIPAL  
M.I.E.T. ENGINEERING COLLEGE  
GUNDUR, TIRUCHIRAPPALLI-620 007.







WORK SHOP FOR M.I.E.T ENGINEERING  
COLLEGE  
PHASE 3

AREA DETAILS

PLINTH AREA (APPROVED) 1077.00 sq.m  
CARPET AREA 1035.54 sq.m

*Aradhya*  
PRINCIPAL ENGINEERING COLLEGE  
M.I.E.T. ENGINEERING COLLEGE  
GUNDUR, TIRUCHIRAPPALLI-625 004