



## M.I.E.T. ENGINEERING COLLEGE

(Approved by AICTE, New Delhi, Affiliated to Anna University, Chennai)

TRICHY - PUDUKKOTTAI ROAD, TIRUCHIRAPPALLI - 620 007.

Email: [principalengg@miet.edu](mailto:principalengg@miet.edu), [contact@miet.edu](mailto:contact@miet.edu)

Website: [www.miet.edu](http://www.miet.edu)

Ph: 0431 - 2660 303



### POLICY ON ADVANCED LEARNERS AND SLOW LEARNERS

## **VISION**

To be a center of excellence in Technical Education through Technical, Ethical and Professional skills for meeting the diverse needs of the Society, in particular Muslim minority community and the Nation.

## **MISSION**

- To impart Quality Education, Training and Research in the fields of Engineering and Technology.
- To provide a conducive learning environment that enables the students to achieve professional and personal growth.
- To expose the contemporary issues of society, ethical practices and to create environmental awareness.
- To provide the required infrastructural facilities for developing the professional and innovative skills.



### **ABOUT THE INSTITUTION**

The M.I.E.T Society, founded by Er. A. Mohamed Yunus during the year 1984 offers a high quality holistic education in an underdeveloped rural and semi-urban region of Tiruchirappalli, Tamil Nadu. The society's members include leading Industrialists, Educationists and Philanthropists.

M.I.E.T Engineering College was established by the Mohamed Institute of Education & Technology Society, Tiruchirappalli in the year 1998 with an objective to promote the cause of higher education. The College is affiliated to Anna University, Chennai. It is recognized as a Muslim Minority Institution.

Our Management extends its fullest support in building the institution as a centre of excellence with technically superior, ethically strong and competent engineers. The serene campus vibrant with aesthetic bliss in an exhilarating convenient location, well connected by road, rail and air is easily accessible. The eco-friendly ambience creates and bestows a healthy learning atmosphere. The multi-disciplinary institution is meticulous with exemplary modern laboratory, workshop facilities and state of art computer centre providing an excellent infrastructure. Good numbers of Doctorates, qualified, experienced, versatile and efficient faculty members mould the students diligently in ethical, moral and academic aspects. Active tutorial and Advisory services are downed to the students to inculcate and harness managerial acumen, knowledge assimilation and respect for human national values with uncompromised discipline.

Spacious, digital library is an epitome of knowledge to imbibe the reading habit with vast collection of Books, Newspapers, National & International Journals, Magazines, and Reference books, Encyclopaedia, World of science, ASME hand

books and course materials. E-learning through NPTEL Video course by NIT and IIT Professors is also available. Career Development Centre of Training and Placement Department, works meticulously to improve and develop life skills and employability by unleashing the latent potentials of the students to confront with the global challenges.

The Research and Development Cell provides ample opportunity and scope for research with abundant resources. Various Club activities are conducted to encourage, motivate and inspire students from diverse culture to harness the talent through their perseverance. Excellent Play grounds, Indoor games and Gym facilities pioneer triumphant champions in continuity in the field of sports. The College Hostel is a home away from home which provides comfortable stay with all amenities. Industry-Institute interaction and real-time projects nurture and craft the budding engineers to bloom and flourish in the field with the prowess guidance in the campus.

### **POLICY ON ADVANCED AND SLOW LEARNERS**

Assessment of learning is a systematic process in an Educational institution to evaluate the student's knowledge and skills on the subject. This assessment is done directly by examining the student's achievements in University examinations, Cycle Tests and Assignments. The term assessment is generally referred to all the activities of the students on a particular course. The assessment of individual student growth is measured and it helps to know the academic performance of the students in each subject.

#### **a. Methodology to identify advanced and slow learners**

As mentioned above, the learning level of the students is being assessed and may be enhanced to obtain a good result in both academic and placement oriented



activities. In order to identify and improve the level of academic performance a continuous conduct of unit test / cycle test and assignments are taken place in each semester. Based on the academic performance in those tests and assignments, the level of performance of the students is assessed by the teachers and the result of these assessments are used as tools to categorize the students into two major groups namely advanced learners and slow learners.

After the completion of Test 1 the students who secured above 60% are identified as Advanced learners and as a follow up the succeeding Advanced learners are being identified as per the below considerations:

1. The students who secured above 60% of marks in ALL the tests conducted.
2. At the completion of all the tests, the students who are being identified as Advanced Learners undergo for verification whether they secured an Average of above 60% in ALL the tests that are conducted in a specific semester.

Likewise, as per the following considerations, the Slow Learners are identified:

1. The students who secured below 50% after the completion of Test 1.
2. The students who are being ABSENT for a test.
3. Even the identified Slow Learners are provided ample opportunities to become an Advanced Learner when they secure above 60% of marks in other tests at the end of all the tests.

#### **b. Methodology to encourage Advanced Learners:**

The Advanced learners are being given an additional care for the betterment of their performance, based on the nature and interest of the students as per the changing scenario. They are having an opportunity in the following fields to equip and enhance themselves additionally.

- The students are encouraged to practice in problem solving techniques that will help to bring out their own talents.

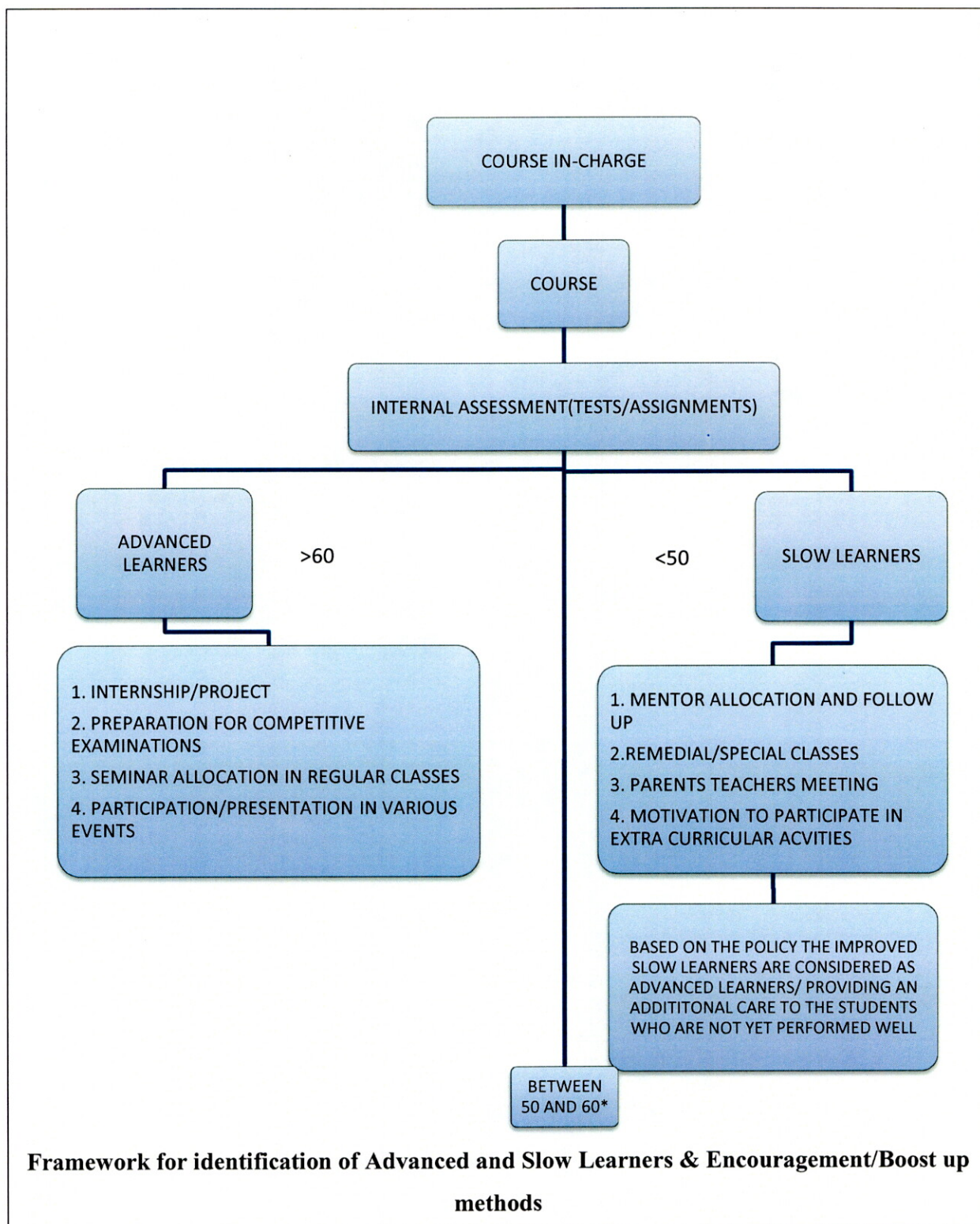
- Learning with intellectual peers would provide them to improve their self interest and confidence to take up higher levels of learning. It is important to respond for this quick pace of learning by providing challenging and engaging activities such as Independent study, Creative thinking activities, etc.,
- The students are allotted with a specific topic to take seminar in the regular classes in order to develop the skill of self learning.
- The students are motivated to do projects/mini-projects and to go internships which help them to improve their domain and technical knowledge more deeply.
- The fast learners are trained to take up competitive examination such as GATE / UPSC / TNPSC etc.
- The students are permitted to enroll in more number of certificate courses like NPTEL and spoken tutorial to strengthen their professional skills; and they are allowed to access online journals like Springer in the digital library which is considered as an additional resource of learning.
- To know the different types of learning skills they are allowed to participate in various workshops, seminars, and technical symposiaas well as in contests to improve their skill sets.
- The advanced learners are advised to help the slow learners to improve their performance.

### **c. Methodology to boost Slow Learners:**

Students who cannot learn at an average rate from the instructional resources, text books, workbooks and learning materials that are designed for all the students in the class room and based on the mere performance in the internal tests are identified as Slow learners. These students are given a sharp attention by providing the following:



- Teaching-learning process adopted with more than one methodology is used in classroom for slow learners.
- The identified slow learners will be under the care of the subject handling faculty. They interact with the concerned students and with their parents to know about the difficulties that are being faced by the students. Based on the output and information the teacher will chart out further plan of action.
- Apart from the regular class room teaching, periodic remedial classes and special classes are conducted for their improvement. This method of teaching helps the students to come out from their deficiencies.
- Periodic counselling is performed to remove the fear of appearing the end semester examination.
- Regular Parents-Teachers Meeting is organized to inform the parents about the status of the students which helps to monitor the progress of the students both by the teacher and parents.
- The students are motivated to participate in Extra Curricular Activities as per their area of interest.



\*Considered as AVERAGE students and they are motivated to perform well in Academics and to participate in Extra Curricular Activities.